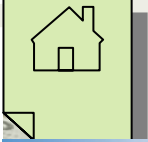


▶ The Truth Behind Cost.....1

▶ MODULAR MARKETWATCH.....1

▶ SOLAR PASSIVE DESIGN PART 10:
SUMMARY.....2

▶ MODULAR CONSTRUCTION
FINANCING..... 2



Modular Press

CUSTOM MODULAR DESIGNS, LLC. PROVIDES THE CURRENT TRENDS IN MODULAR HOME BUILDING

The Truth Behind Cost



One of the most frequently asked questions from our customers is...How much does a modular home cost?

This is an excellent question that is dependent on a number of factors. Some factors that may impact the price include: the size of the home, building specifications, and finish options (i.e. a designer kitchen).

Another factor that may affect the price is the location of the building site. The distance between the factory and the building site will increase transportation costs.

How detailed is the house plan? A home with intricate

details will increase the price. Intricate details include bump-outs, decorative gables, dormers and high design floor plans. Each of these design elements will have a direct effect on the modular price.

The building program you choose will also impact the price. Using our Assist-U-Build® program, the customer acts as the general contractor. This drastically reduces the overall cost of the home.

In order to properly advise our customers regarding pricing, we will work with our customers to compile a list of detailed information at the beginning of the modular process. This information enables us to provide a competitive and accurate budget.

We look forward to providing you with the very best home for the best possible price.

Steps to Modular Building

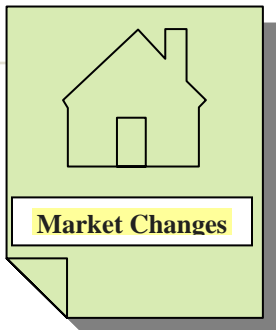


The seventh step in the modular building process is making the local electrical and plumbing connections.

There are a few electrical items that need to be completed after the home is set. Some of these items include: tie-in of circuit breaker panel, meter trough, conduit master, service entrance cable, basement cable, sump pump, and 220v service for Range/Dryer. Then the wiring from the individual modules needs to be connected.

There are some plumbing items that need to be completed after the set of the home including: rough plumbing of the basement, tie-in to well and/or septic system, installation of shower doors, gas pipes (range/dryer/water heater), and pressure testing of the system.

These tasks will be completed by a local subcontractor. We can provide names of company's we and our previous clients have used in the past.



MODULAR MARKET WATCH

There is a distinct difference between modular and manufactured housing. A modular home is built to the same stringent building codes as a site built home. Modular homes are built with 30% more material in climate controlled factories. A modular home is not a mobile or manufactured home that are built to HUD specifications. Please visit our website at www.custommodulardesigns.com to procure more information on modular homes and the differences that make them higher quality than manufactured (mobile) homes.



Solar Passive Design Part 10: Summary

This is Part 10 of our 10 Part series on Solar Passive Design. Providing the knowledge you need to cut heating & cooling costs and protect our environment.

Over the past 9 months we have had the opportunity to look closely at Passive Solar Design and how it can be incorporated into modular homes. Passive Solar Design is a way to reduce heating and electric bills. Our goal is to provide more efficient modular homes for our eco-budget minded customers.

We previously discussed the importance of a buildings site orientation. We discussed the impact that site orientation will have on the design of the modular home. By designing the home with certain angles and window designs a customer can save hundreds of dollars on their heating and electrical bills.

The location of windows and the type of glazing used

will improve a homes passive design. A modular home should be designed with windows, shading and exterior elements (decks, arbors, etc) that work with the angle of the sun in relation to the home. During the summer months the goal is to have less sun penetrate thereby reducing the amount of heat gain in the home. During the winter months the opposite effect is desired.

It is also important to add effective insulation. The insulation used in our modular homes increases their overall efficiency. Insulation helps keep the heat in during the winter thereby decreasing heating bills.

Insulation effectiveness

can increase with the use of thermal mass products that help absorb the heat from the sun. This heat that is absorbed during the day keeps the home cool. At night the stored heat is released keeping evenings at comfortable temperatures.

All aspects of Solar Passive Design make our modular homes more efficient.

To learn more about a specific topic please visit our website to view all the prior issues of our newsletter. There you will find each section of solar passive design described in detail.

If you are ready to take the next step then please feel free to contact us to discuss your modular project.

MODULAR CONSTRUCTION FINANCING:

Finance Company of the Month



First Eastern Mortgage Corporation

Jay Dwyer
Assistant Vice President

5 Lafayette Rd. Unit 3
Hampton, NH. 03842
Phone: 800.367.0649 x11
Fax: 603.926.0861

Email: jayd@firsteastern.com
Website: www.firsteastern.com

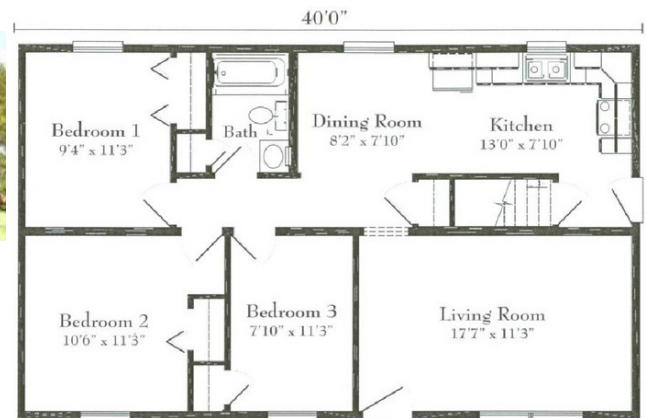
Home of the Month

Georgetown Ranch

\$63,300.00*

24' x 40'

3 Bedrooms, 1 Full Bathroom
Dining Room, Living Room, Kitchen



CUSTOM MODULAR
DESIGNS, LLC

94B Jefferson Blvd.
Warwick, RI. 02888
401-490-0944

www.custommodulardesigns.com

CALL CUSTOM MODULAR DESIGNS FOR ALL OF YOUR MODULAR CONSTRUCTION NEEDS AND FIND OUT WHY CUSTOM MODULAR DESIGNS, LLC IS THE FASTEST GROWING MODULAR COMPANY IN NEW ENGLAND.

Copyright protected worldwide. No portion of this newsletter may be copied or reproduced in whole or in part without the express written consent of Custom Modular Designs, LLC.