



▶ Our Assist-U-Build Building Program Defined.....1



▶ MODULAR MARKETWATCH.....1



▶ MODULAR QUESTIONS ANSWERED .....2



▶ MODULAR CONSTRUCTION FINANCING..... 2

# Modular Press

CUSTOM MODULAR DESIGNS, LLC. PROVIDES THE CURRENT TRENDS IN MODULAR HOME BUILDING

## Our Assist-U-Build® Building Program Defined

Custom Modular Designs' Assist-U-Build® Modular Home Building Program is ideal for homeowners, home builders, and land developers who want a finished high quality modular home while saving a vast amount of money in the process of building the home.

Our competitors in the modular home building industry typically offer either a "Drop, Set, and Weather Tight" program or a "SET and GET" program. We are proud to proclaim that we DO NOT "Set and Get". Custom Modular Designs offers a more complete modular building program and goes a step further with our Assist-U-Build® Program. Our Assist-U-Build® Program offers more service than our competitors' "SET and GET"

type of programs. Custom Modular Designs is there for our customers from DAY 1 - "Concept" (of your modular home) to the LAST DAY - "Completion" (of your modular home) and every step of the way in between.

Our Assist-U-Build® Modular Home Building Program includes the following:

- Detailed modular home design plans
- Third party inspected and state-approved modular home permit prints
- All sales and use taxes
- Transportation from our modular factory to your site
- Crane, crane operator, and an experienced set-crew to secure your well built modular home onto your foundation and make your modular home weather-tight

For further information contact our offices today.

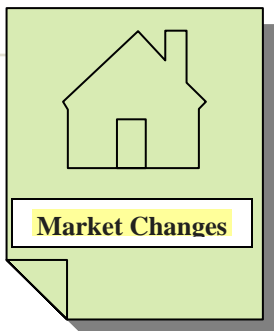


## Steps to Modular Building

The ninth step to the building process is finishing the exterior of your modular home. This includes the following: stairs, decks, porches, gutters and downspouts, siding, masonry, exterior lighting, walks and driveway, final grading of your yard and landscaping.

When the interior and exterior of your modular home has been completed then you are ready for your final inspection and certificate of occupancy. At last, it is time to move-in and make the home your own.

If you have any questions or concerns regarding the building process please feel free to contact one of the knowledgeable team members at Custom Modular Designs. We will be happy to discuss your project in more detail.



## MODULAR MARKET WATCH

Now is a better time than ever to build a modular home with Custom Modular Designs. Building lots have become more affordable and building costs are down. Under our Assist-U-Build Home Building Program, our average customer saves 30 to 40 percent when compared to stick building. To find out more about how we can help you with this endeavor contact us 401.490.0944 or visit our website at [www.custommodulardesigns.com](http://www.custommodulardesigns.com)



# Modular Questions Answered

*A series exploring some of the most frequently asked questions about Modular Homes.*

## Why are modular homes better constructed than site built homes?

Some of the factors that contribute to the superior quality of our modular homes are as follows:

**Materials.** Only the best quality building materials are used to construct our modular homes. Our modular home manufacturers order huge volumes of materials directly from the factories and mills. Many products are made specifically for our modular homes.

**Climate Control.** Building a modular home in a factory eliminates major problems typically associated with site-built homes. Our modular manufacturers are able to avoid weather related defects including moisture saturation

of the lumber, drywall, and insulation. Inside our climate-controlled factories, there is no warping of walls, swelling of doors, or freezing of pipes and plumbing fixtures. Our customers are not inconvenienced by weather delays, and move-in dates are not unnecessarily extended.

**State of the Art Equipment.** Our factories use sophisticated, high-tech equipment. This equipment results in modular homes that are precisely built exactly as designed. Every aspect of our modular home is level, square, and plumb!

**Better Built.** Our modular homes are built to withstand the rigors of shipping. Walls, floors, and ceilings are not only nailed like site-built homes; they are nailed, bracketed, glued,

and corner bolted.

**More Material:** Our modular homes are built with up to 30% more construction material as compared to a site-built home, with at least 10% less waste.

**Energy Efficient.** Superior engineering and quality products greatly increase the energy efficiency of our modular homes.

With the combination of these elements modular homes are constructed in a superior way to site built homes.

If you have any questions that you would like us to touch upon in future newsletters please let us know. We will be glad to touch upon any questions here in our newsletter.

To learn more about modular construction please visit our website where you can find a wealth of information.

## MODULAR CONSTRUCTION FINANCING:

*Finance Company of the Month*

### Salem Five

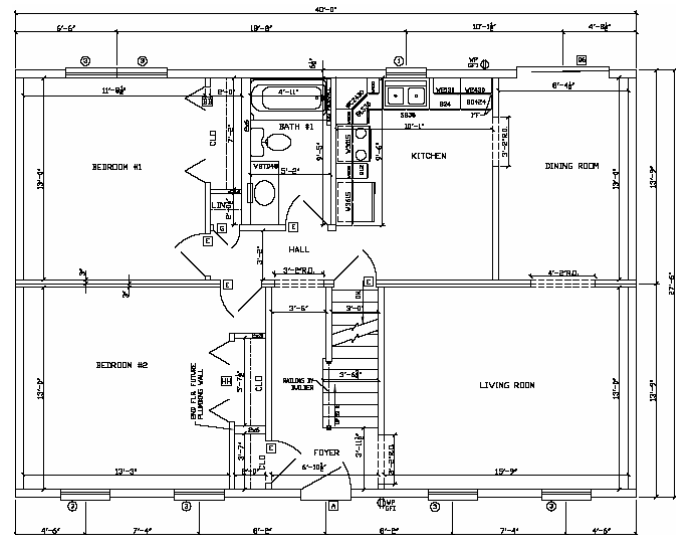
Mark Butler  
Vice President

210 Essex St  
Salem, MA. 01970  
Toll Free: 800.932.5626  
Phone: 978.720.5684  
Email: [mark.butler@salemfive.com](mailto:mark.butler@salemfive.com)  
Website: [www.salemfive.com](http://www.salemfive.com)

## Home of the Month

**Nantucket**  
**\$67,200.00\***  
27'6"x40'

2 Bedrooms, 1 Full Bathroom  
Dining Room, Living Room, Kitchen



**CUSTOM MODULAR**  
DESIGNS, LLC

94B Jefferson Blvd.  
Warwick, RI. 02888  
401-490-0944

[www.custommodulardesigns.com](http://www.custommodulardesigns.com)

**CALL CUSTOM MODULAR DESIGNS FOR ALL OF YOUR MODULAR CONSTRUCTION NEEDS AND FIND OUT WHY CUSTOM MODULAR DESIGNS, LLC IS THE FASTEST GROWING MODULAR COMPANY IN NEW ENGLAND.**

Copyright protected worldwide. No portion of this newsletter may be copied or reproduced in whole or in part without the express written consent of Custom Modular Designs, LLC.