

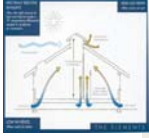


▶ MEET THE TEAM THAT DRIVES CUSTOMODULAR DESIGNS.....1

○ ISSUE 7 | ○ VOLUME 2 | ○ March 2008



▶ MODULAR MARKETWATCH.....1



▶ SOLAR PASSIVE DESIGN PART 1: INTRODUCTION.....2



▶ FINANCING: MODULAR NEEDS... 2

Modular Press

CUSTOM MODULAR DESIGNS, LLC. PROVIDES THE CURRENT TRENDS IN MODULAR HOME BUILDING

Meet the team member of Custom Modular Designs



This Month's Team Member
Barry L. Rice
Chief Service Technician

Each month we introduce one of our team members to you, our valued customers. Once you meet our team then you will know why Custom Modular Designs is the fastest growing modular home company in New England. This month we will take a peek into the life of our Chief Service Technician (Barry Rice).

Barry Rice is the Chief Service Technician for Custom Modular Designs, LLC. Barry has over twenty years of experience in the construction, home building and home remodeling industry. He possesses a unique ability to work through service issues specific to

modular construction. Barry has extensive field experience and training. He is a highly skilled carpenter and service technician. Barry's responsibilities at Custom Modular Designs include pre-set site inspections, foundation inspections, pre-set maintenance and assistance, post-set maintenance and assistance, and post-set service related issues. Barry is also responsible for maintaining office and equipment related service issues.

Barry is just one of the members that make Custom Modular Designs a success, look for next months issue to meet another member of our team.

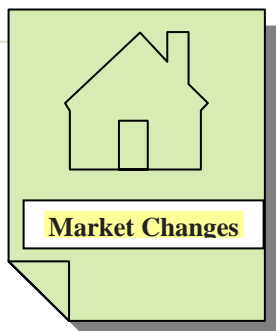
Steps to Modular Building



The modular process can be overwhelming to those new to the building industry. The team members at Custom Modular Designs are committed to making the entire process stress free. We have broken the modular home building process into steps.

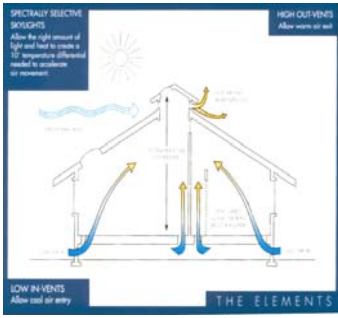
The first step is locating and purchasing a building lot. Once the land is purchased the customer would need to clear the title on the property. The next step is a site inspection to determine if the lot is modular accessible. The lot will also need a Perk/Probe test and a land survey completed.

For more information on this process please contact us at 401.490.0944



MODULAR MARKET WATCH

Breaking down barriers is the new trend in home design. Open floor plans are in high demand. Home owners want their kitchen, dining room and living area to become one large entertaining area. They want to be able to cook their favorite meals while carrying on conversations with their guests. Custom Modular Designs offers many solutions for the home builder that wants this open floor plan. To find out how we can help please call us 401.490.0944 or view our floor plans at www.custommodulardesigns.com.



Solar Passive Design Part 4: Passive Solar Cooling

This is Part 4 of a 10 Part series on Solar Passive Design. Providing the knowledge you need to cut heating & cooling bills and protect our environment.

Over the past few months we have explored Solar Passive Designed modular homes. This month we will be looking at Passive Solar cooling.

This form of cooling minimizes heat gain from external environment and facilitates heat loss through the use of air movement, breezes, evaporation and earth coupling. The main elements of solar passive cooling design include: orientation to cool breezes, increasing natural ventilation by reducing barriers for air movement (i.e. open floor plan), adding fans to areas that don't receive natural

breezes, use of suitable windows with glazing to minimize heat gain while maximizing ventilation, use of effective shading, adequate levels of insulation, and use of light colored roofs/walls to reflect more solar radiation therefore reducing heat gain.

When exploring the design of your modular home consider design elements to maximize solar cooling. Increase ventilation by adding high level windows and ceiling (roof) space vents. The ceilings and furnishings should be positioned to optimize efficiency of fans, cool breezes and convective ventilation. It is better to design the modular home with mechanically

cooled rooms located in thermally protected areas.

The main goal with solar passive cooling is to incorporate the indoor and outdoor relationship. To improve this relationship - add appropriate screened, shaded and rain protected outdoor living areas. It is a matter of designing a home that works with the natural elements and natural orientation of your location.

To learn more detailed information about a Solar Passive Modular Home Design, please contact our office at 401.490.0944.

FINANCING:
Modular Needs
 Finance Company of the
 Month

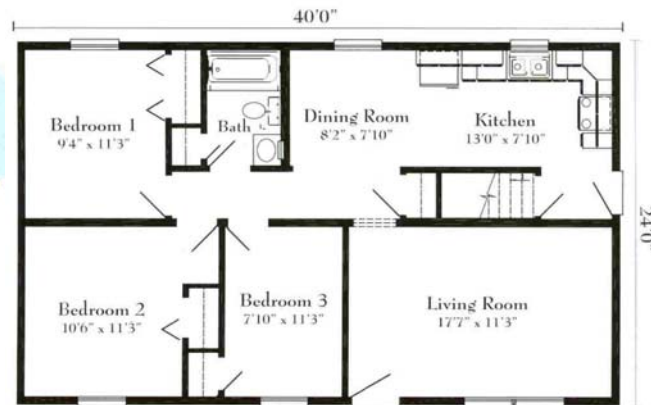
Westerly Community Credit Union

Paula Jackson

122 Granite St
 Westerly RI 02891
 Phone: 401.596.7000 Ext 341
 Fax: 401.348.1044
 Email: PJackson@WesterlyCCU.com
 Website: <http://www.westerlyccu.com/>

Home of the Month

Georgetown Ranch
\$63,600.00*
 24'x40'
 3 Bedrooms, 1 Full Bathroom
 Dining Room, Living Room
 Kitchen



94B Jefferson Blvd.
 Warwick, RI. 02888
 401-490-0944

www.custommodulardesigns.com

CALL CUSTOM MODULAR DESIGNS FOR ALL OF YOUR MODULAR CONSTRUCTION NEEDS AND FIND OUT WHY CUSTOM MODULAR DESIGNS, LLC IS THE FASTEST GROWING MODULAR COMPANY IN THE NEW ENGLAND REGION OF THE UNITED STATES.

© Copyright protected worldwide. No portion of this newsletter may be copied or reproduced in whole or in part without the express written consent of Custom Modular Designs, LLC.