



▶ Modular Home Inspections:
Aiming for Perfection.....1



▶ MODULAR MARKETWATCH.....1



▶ SOLAR PASSIVE DESIGN PART 8:
SHADING.....2



▶ FINANCING: MODULAR NEEDS... 2

○ ISSUE 11 | ○ VOLUME 2 | ○ July 2008

Modular *Press*

CUSTOM MODULAR DESIGNS, LLC. PROVIDES THE CURRENT
TRENDS IN MODULAR HOME BUILDING

Modular Home Inspections:

Aiming for Perfection



There are many different levels of inspections that our modular homes are subjected to prior to completion. We begin with a site inspection completed by one of our highly skilled project managers. This inspection is done to determine if the modules can be delivered to the site and to determine if offsite storage is needed.

The next inspection occurs at our factory by a third party inspector. As our modular homes are manufactured a number of inspections are completed. These inspections guarantee that our homes are manufactured to the governing building code.

There are also a number of quality control inspections. Our factory officials carefully inspect our homes at various stages of construction to make certain that the home meets our rigorous quality expectations. Any defects found are promptly corrected at the factory before the modular home is shipped.

Prior to the delivery of the modular home, a CMD project manager conducts a foundation and pre-set site inspection. All of our homes are inspected when the modular home arrives at the building site. We also conduct a post set inspection of our modular homes. At this time a CMD professional compiles a ship loose inventory list and notes any necessary service related issues.

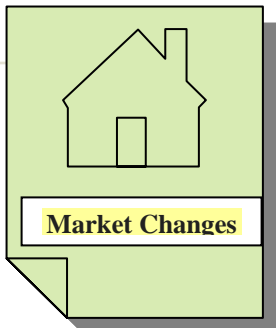
Steps to Modular Building



The fifth step in the modular building process is the modular set. The modules are delivered from the manufacturer to the customers' building site. Upon arrival, the sections are carefully inspected. All ship-loose materials are inventoried. Generally, the modules are set the day after delivery.

The day of the set all modules are moved into place and set onto the foundation. Once this step is completed, the modules' mating surfaces are prepared and modules are fastened together. The wiring, plumbing lines, and stairs are prepared. The support columns are installed. The roof sections are lifted into place and roofing shingles are installed.

The home is weather tight and secure by the end of the set. The picture above displays what the home should look like at the end of a set.



MODULAR MARKET WATCH

There is an increasing trend in small business professionals working from home. This trend has created a need for home offices to be incorporated into the floor plans. Key features of our plans include private entrances, in-home offices with built in book cases, hi-tech wiring and other home office conveniences. Please call us at 401.490.0944 to discuss a home office we can design for your new modular home. Please visit our website at www.custommodulardesigns.com to view homes we have completed and floor plans we have available.



Solar Passive Design Part 8: Shading

This is Part 8 of our 10 Part series on Solar Passive Design. Providing the knowledge you need to cut heating & cooling costs and protect our environment.

An important part of passive solar design is shading. The goal is to use the correct amount of plants, balconies, awnings, etc. to control the amount of heat gain in the house. If done correctly shading can reduce 90% of radiant heat gain.

Radiant heat gain is a result of the sun's rays being absorbed by interior furnishings. This heat is then re-radiated within the home. The newly transformed wavelengths will not easily penetrate the glass windows – therefore remaining in the home and heating the house. This radiant heat is desirable during the winter months but must be controlled during the summer.

There are multiple ways to add shading to a modular home. Structural components include; awnings, balconies, pergolas and for a contemporary look – shadecloth. Natural components such as evergreen trees, large bushes, ground covering plants, etc. are a great way to add the necessary shading.

It is important to use a combination of components to achieve the desired amount of shading. It is also important to use the right elements in the areas it is needed. An evergreen tree should be placed in locations that sun is undesirable at all times of the year. Structural components should be designed at angles to deter sunlight during the summer but allow the sunlight to penetrate

during the winter. These angles will be dependent on the modular home site, design and location of the structures.

It is a good idea to choose plants that are indigenous to your area and require little maintenance. The plants you choose will reduce the exposure of UV rays, costs, and energy. They will also improve the environment by filtering out pollutants.

To learn more about shading techniques for your modular home, solar passive design or other green economical products feel free to contact our office.

MODULAR CONSTRUCTION FINANCING:

Finance Company of the Month



Westerly Community Credit Union
Paula Jackson

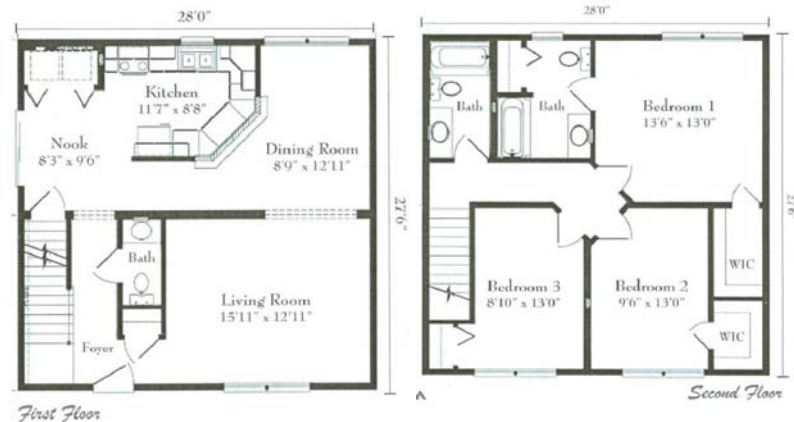
122 Granite St
Westerly, RI. 02891
Phone: 401.596.7000 ext. 341
Fax: 401.348.1044

Email: PJackson@WesterlyCCU.com
Website: www.westerlyccu.com

Home of the Month

Haverford Colonial
\$83,300.00*
28'x28'

3 Bedrooms, 2 1/2 Bathrooms
Dining Room, Living Room
Kitchen, Breakfast nook



CUSTOM MODULAR
DESIGNS, LLC

94B Jefferson Blvd.
Warwick, RI. 02888
401-490-0944

www.custommodulardesigns.com

CALL CUSTOM MODULAR DESIGNS FOR ALL OF YOUR MODULAR CONSTRUCTION NEEDS AND FIND OUT WHY CUSTOM MODULAR DESIGNS, LLC IS THE FASTEST GROWING MODULAR COMPANY IN NEW ENGLAND.

Copyright protected worldwide. No portion of this newsletter may be copied or reproduced in whole or in part without the express written consent of Custom Modular Designs, LLC.