



▶ MEET THE TEAM THAT DRIVES CUSTOMODULAR DESIGNS.....1



▶ MODULAR MARKETWATCH.....1



▶ SOLAR PASSIVE DESIGN PART 1: INTRODUCTION.....2



▶ FINANCING: MODULAR NEEDS... 2

○ ISSUE 6 | ○ VOLUME 2 | ○ February 2008

Modular Press

CUSTOM MODULAR DESIGNS, LLC. PROVIDES THE CURRENT TRENDS IN MODULAR HOME BUILDING

Meet the team member of Custom Modular Designs



*This Month's Team Member
Amanda DuClau
Executive Office Administrator*

Each month we introduce one of our team members to you, our valued customers. Once you meet our team then you will know why Custom Modular Designs is the fastest growing modular home company in New England. This month we will take a peek into the life of our Executive Office Administrator (Amanda DuClau).

Amanda is the Executive Office Administrator for Custom Modular Designs, LLC. Amanda is an experienced and efficient office administrator. She has been involved in modular home building for the majority of her working career. Amanda's passion for our valued customers shines through from the moment she first says hello. Amanda is an

important and valued team member.

Amanda's responsibilities at Custom Modular Designs include initial customer contact, customer intake, creation and maintenance of our unique customer tracking system, processing of customer literature requests, maintenance of office inventory and supplies and a number of other tasks that enable our organization to maintain its extremely high level of customer satisfaction. Amanda also coordinates all post set service related issues.

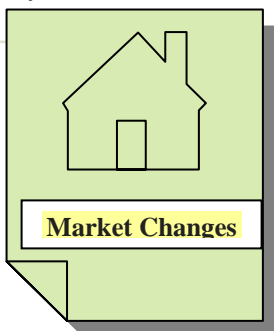
Amanda is just one of the members that make Custom Modular Designs a success, look for next months issue to meet another member of our team.



Modular Essentials

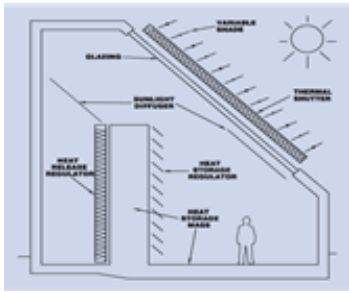
A modular home fact: modular homes produce 30% less waste than site built homes. Site built home builders often over order on materials needed. The extra trim, tyvek house wrap and excessive material waste is left behind to fill up a large portion of our landfills. These large amounts of waste products are drastically reduced by the modular building process.

Modular homes are built in our factories. The building materials are stored in protected locations. Our factories buy in bulk helping to reduce excess waste. Our modular homes are environmentally friendly, high quality and affordably priced.



MODULAR MARKET WATCH

The modular commercial building market received a huge boost by the recent cut in the interest rates and by an increase in commercial investors. Many builders and developers are choosing modular construction to save time and money for their new commercial and multi-family developments. To find out more about how we can help you experience the value of our modular homes please call us 401.490.0944 or visit our new website at www.custommodulardesigns.com.



Solar Passive Design Part 3: Passive Solar Heating

This is Part 3 of a 10 Part series on Solar Passive Design. Providing the knowledge you need to cut heating & cooling bills and protect our environment.

Over the past few months we have explored Solar Passive Designed modular homes. This month we will be looking at Passive Solar Heating.

Passive solar heating is an inexpensive way to heat your modular home and can easily be added into your homes design. Passive solar design is dependent on a few applications: orientation of daytime living areas, appropriate areas of glass, passive shading of glass, thermal mass for storing heat, insulation and draught sealing, floor plan zoning based on heating needs and advanced glazing solutions. Our modular home designers

can help with the process of deciding what design features each individual home will need.

Passive solar heating works on a few different levels. The solar radiation is trapped through windows exposed to full sun - to improve efficiency of this process look for window frames with advanced glazing. The trapped heat is absorbed and stored by materials with high thermal mass. The heat is re-radiated and distributed through the home when needed by natural air flow. To minimize heat loss it is important that walls, ceilings, and exposed floors are well insulated. It is a good idea to minimize air infiltration through airlocks,

draught sealing, airtight construction (which is standard on all modular homes) and quality windows/doors. It is important to choose a floor plan that compliments solar design. To increase solar efficiency in cooler climate areas it would be beneficial to build a compact modular home that minimizes roof and external wall surfaces. We have a large selection of compact homes that provide the space you need for living but will give the design needed for passive solar heating.

To learn more detailed information about the best orientation for a Solar Passive Modular Home Design, please contact our office at 401.490.0944.

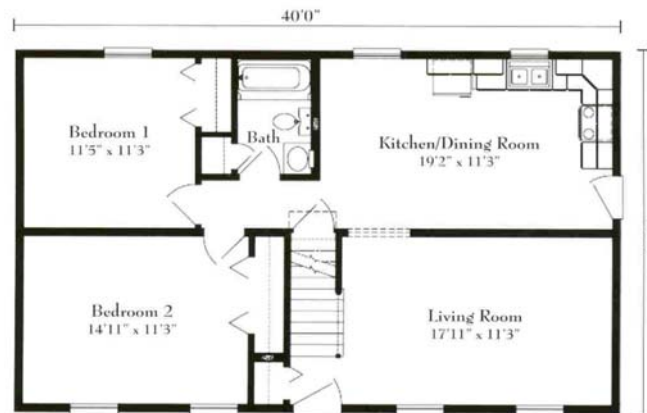
FINANCING:
Modular Needs
 Finance Company of the
 Month

Ngim Prom

20 State St.
 Lynn, MA. 01901
 Toll Free: 1.800.255.7787
 Phone: 978.720.5740
 Email:
 ngim.prom@salemfive.com
 Website:
<http://www.salemfive.com>

Home of the Month

Millbridge Cape
\$64,900.00*
 24' x 40'
 2 Beds, 1 Full Bath
 Dining Room, Living Room, Kitchen
 Unfinished upper level



CUSTOM MODULAR
 DESIGNS, LLC

94B Jefferson Blvd.
 Warwick, RI. 02888
 401-490-0944

www.custommodulardesigns.com

CALL CUSTOM MODULAR DESIGNS FOR ALL OF YOUR MODULAR CONSTRUCTION NEEDS AND FIND OUT WHY CUSTOM MODULAR DESIGNS, LLC IS THE FASTEST GROWING MODULAR COMPANY IN THE NEW ENGLAND REGION OF THE UNITED STATES.

© Copyright protected worldwide. No portion of this newsletter may be copied or reproduced in whole or in part without the express written consent of Custom Modular Designs, LLC.