

▶ Modular Home Design: Multi-Family and Commerical.....1

▶ MODULAR MARKETWATCH.....1

▶ SOLAR PASSIVE DESIGN PART 9: SKYLIGHTS.....2

▶ MODULAR CONSTRUCTION FINANCING..... 2



Modular Press

CUSTOM MODULAR DESIGNS, LLC. PROVIDES THE CURRENT TRENDS IN MODULAR HOME BUILDING

Modular Home Design; Multi-Family & Commerical



Modular home construction is quickly becoming the standard to be compared to in the home building industry. However, modular construction is not limited to only home building. Many informed consumers have begun to realize the benefits of modular construction for multi-family and commercial buildings.

The benefits of modular construction are exhaustive. Modular design aspects have drastically improved over the last few years. No longer are consumers limited to single-box floor plans with little character. Modular floor plans are exciting and versatile. Our modular designs range from small ranches, multi-family colonials to contemporary apartment

complexes. This increase in design options in the industry is a direct result of new technologies.

Many investors choose to build modular because of the cost benefits associated with modular construction. Modular construction costs are less than site built construction. The modular portion of the project is a fixed price. This makes project budgeting painless. Lower carrying costs, smaller local workforce costs, lower insurance fees, and faster completion times make modular construction the obvious choice for the cost conscious consumer.

Custom Modular Designs is experienced in small and large construction projects including residential, multi-family, and commercial.

We look forward to making your next project a success!



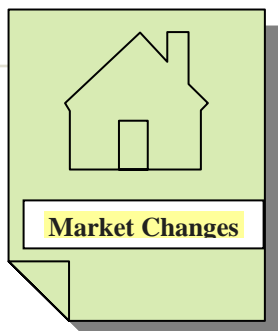
Steps to Modular Building

The sixth step in the modular building process is finishing the exterior. Once your home has been set and weather tight then the exterior work is completed.

The exterior work includes: siding, masonry work, paint, shutters, chimneys and stacks, gutters, garages, porches, decks and patios.

With our Assist-U-Build® modular building program our company will provide you with a list of sub-contractors that are highly trained in exterior finish work. Throughout the process we are available to assist our customers and their subcontractors with any questions or concerns.

To learn more about the modular building process please take the time to visit our website at www.custommodulardesigns.com. There is a wealth of information regarding modular construction, including back issues of our newsletter.



MODULAR MARKET WATCH

Custom Modular Designs has an ever increasing list of valued clients that choose to demolish their existing worn-out home and replace it with a new modular home. This is a great option for clients who love their current location but want an updated home. Please call us at 401.490.0944 to discuss your tear down project and what design options we can do for you. Please visit our website at www.custommodulardesigns.com to view homes we have completed and floor plans we have available.



Solar Passive Design Part 9: Skylights

This is Part 9 of our 10 Part series on Solar Passive Design. Providing the knowledge you need to cut heating & cooling costs and protect our environment.

This month we are looking at skylights and how they can benefit a solar passive designed modular home.

Skylights provide “cool light” – this type of light acquires less heat gain than artificial lights. Skylights admit daylight and disperse it evenly through the room. This effect results in lower energy costs and increased visibility.

A skylight can admit up to three times the amount of light compared to a vertical window. This sunlight improves light quality and reduces energy costs. With this increase in sunlight the homeowner can cut down on using artificial heating.

The amount of light and heat gain is dependent on the size, location, type, and glazing of the skylight window. The smaller the window the less light and heat gain. The glazing techniques that we have previously discussed can be applied to skylight windows.

The benefits of glazing on vertical windows will have the same effects on skylights (See Modular Press–June 2008).

Operable skylights offer significant benefits when located on the upper levels of the home where a large percentage of heat is trapped. An operable skylight allows heat to escape during summer months.

Depending on the home some skylights will include a built in shaft. This shaft will affect light

and heat gain. The amount of light is dependent on the length of the shaft. The longer the shaft the less sunlight will penetrate.

A regularly scheduled maintenance program will increase the longevity of the skylights. Surfaces should be cleaned 1-2 times per year. Operable skylight hardware should be routinely inspected for defects. All leaf debris should be removed before moisture causes irreparable damage.

To learn more about skylights and other solar passive design elements for your modular home feel free to contact our office.

MODULAR CONSTRUCTION FINANCING:

Finance Company of the Month



First Eastern Mortgage Corporation

Jay Dwyer
Assistant Vice President

5 Lafayette Rd. Unit 3
Hampton, NH. 03842
Phone: 800.367.0649 x11
Fax: 603.926.0861

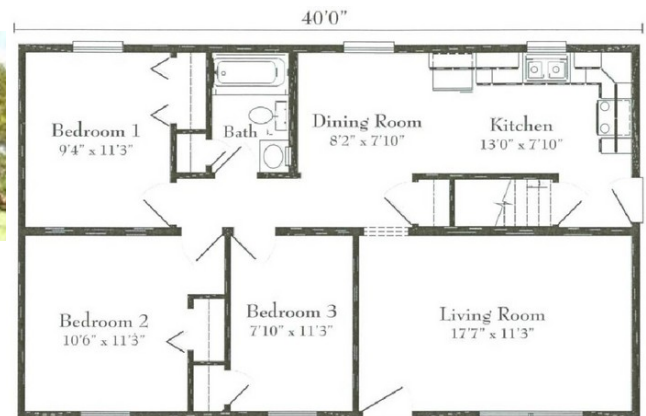
Email: jayd@firsteastern.com
Website: www.firsteastern.com

Home of the Month

Georgetown Ranch
\$63,300.00*

24'x40'

3 Bedrooms, 1 Full Bathroom
Dining Room, Living Room, Kitchen



CUSTOM MODULAR
DESIGNS, LLC

94B Jefferson Blvd.
Warwick, RI. 02888
401-490-0944

www.custommodulardesigns.com

CALL CUSTOM MODULAR DESIGNS FOR ALL OF YOUR MODULAR CONSTRUCTION NEEDS AND FIND OUT WHY CUSTOM MODULAR DESIGNS, LLC IS THE FASTEST GROWING MODULAR COMPANY IN NEW ENGLAND.

Copyright protected worldwide. No portion of this newsletter may be copied or reproduced in whole or in part without the express written consent of Custom Modular Designs, LLC.