



▶ NEW ENERGY STAR PROGRAM.....1

▶ MODULAR MARKETWATCH.....1

▶ OUR ASSIST-U-BUILD® PROGRAM DEFINED.....2

▶ MODULAR CONSTRUCTION FINANCING.....2

○ ISSUE 5 | ○ VOLUME 3 | ○ May 2009

Modular Press

CUSTOM MODULAR DESIGNS, LLC. PROVIDES THE CURRENT TRENDS IN MODULAR HOME BUILDING

Standard Specifications!

Custom Modular Designs offers every imaginable building specification and option. Our standard Bronze (entry) Level specifications are listed below.

Floors & Exterior Walls:

- ✦ 2"x6" Construction – 24" o.c.
- ✦ 8' sidewalls
- ✦ Smooth finished ceilings
- ✦ 2"x10" solid wood floor joists 16" o.c.

Interior Walls & Ceilings

- ✦ ½" smooth finish drywall throughout
- ✦ 5/8" smooth finish ceiling
- ✦ Finished with 2 coats of acrylic primer

Exterior Siding

- ✦ Lifetime warranty solid vinyl siding – Crane American Dream

Windows & Doors

- ✦ MW solid vinyl tilt window, double hung with fully screen, low-e glass, welded seems
- ✦ Solid wood window-sills and jambs
- ✦ Fiberglass entry door with lockets

Interior Doors and Trim

- ✦ 6-panel door with mortised door hinges
- ✦ solid wood casing and baseboard

Floor covering

- ✦ Vinyl in kitchen, baths, laundry and foyer
- ✦ 25oz lush stain-resistant carpet and ½" rebound pad

Kitchens

- ✦ Solid oak or white finished Merillat Cabinets
- ✦ Laminate countertops with square edge
- ✦ Double bowl stainless steel sink with single lever

Bathrooms

- ✦ Vanities with cultured marble countertops
- ✦ Acrylic tubs and showers
- ✦ Elongated porcelain toilets
- ✦ Beveled mirrors or medicine cabs

Other

- ✦ Custom designed plans
- ✦ Engineered stamped blue prints
- ✦ Taxes and transportation

For further information regarding our standard and upgrade specifications please visit our website at www.custommodulardesigns.com



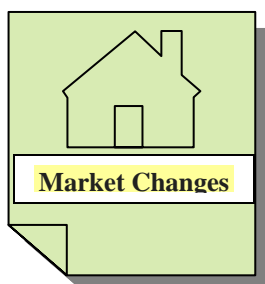
First-Time Home Buyer Tax Credit

Now is great time to take advantage of a limited time offer from the Federal Government. All first time home buyers are eligible for a tax credit of up to \$8,000. The American Recovery and Reinvestment Act of 2009 authorizes a tax credit to qualified first-time home buyers purchasing a principal residence on or after January 1, 2009 and before December 1, 2009.

Take advantage of this tax credit by building a new modular home. The home can be built and on your foundation in 6-12 weeks. This will provide you with plenty of time to make the December 1st deadline.

For further information regarding this tax credit please visit <http://www.federalhousingtaxcredit.com/2009/home.html>. There is a list of FAQ's that clearly spell out who is eligible and the actions to be taken in order to receive the credit.

To learn more about how we can help build your first home please contact our office at 401.490.0944.



MODULAR MARKET WATCH

Many customers consider their master bathroom a sanctuary. This feeling can be enhanced by the addition of a jetted corner tub and spacious double vanites. Both are a staple in any luxury master bathroom. Contact our office today to start designing the modular home with the bathroom you have always wanted. For further information regarding our products visit our website www.custommodulardesigns.com.



Evolution of Modular Home Design

Smashing the myths of modular construction

Myth: Modular homes are confined to simple box designs.

Fact: Modular homes are **not** limited in design. Modular homes range from standard ranches to custom mansions. The design style can be a traditional colonial to a lake side contemporary. The limits with modular homes come down to the land, town restraints and budget.

When modular homes were first brought into the market there were restrictions on design. These restrictions were due to the technology of the era. The factories were not equipped to design and build custom homes with specialized roof systems, turreted staircases, and full shed dormers.

Our modular home designs are endless. The limitations of

the past are gone. Please visit us at www.custommodulardesigns.com. In the floor plan section of our website, you will be able to view numerous amazing floor plans. All of our modular home plans can be modified to fit your specific needs. The plan changes are endless. For example you can add an island in the kitchen, increase the size of a room, or reconfigure the entire floor plan.

If a modified plan is not adequate then we can also create custom plans or work from your existing custom plans.

If you are thinking of building a new home then we can help. Building a modular home using our Assist-U-Build Program

provides you with the finest home at contractor cost without the headaches of stick building. You are no longer restricted to the overpriced, delayed and inferior product of stick built homes. Start the process now of building an affordable, well-built custom modular home.

If you already have plans bring them in and we can provide you with a detailed estimate. If you are still trying to find a floor plan then please visit our website to see if any are a great fit.

If you have any questions please contact our office or fill out a contact form on our website.

MODULAR CONSTRUCTION FINANCING:

Finance Company of the Month



First Eastern Mortgage Corporation

*Jay Dwyer
Assistant Vice President*

5 Lafayette Rd. Unit 3
Hampton, NH 03842
Phone: 800.367.0649 ext 11
Email: jayd@firsteaster.com
Website: www.firsteaster.com

Home of the Month

The Havorford

\$83,300.00*

28' x 28'

2-Story

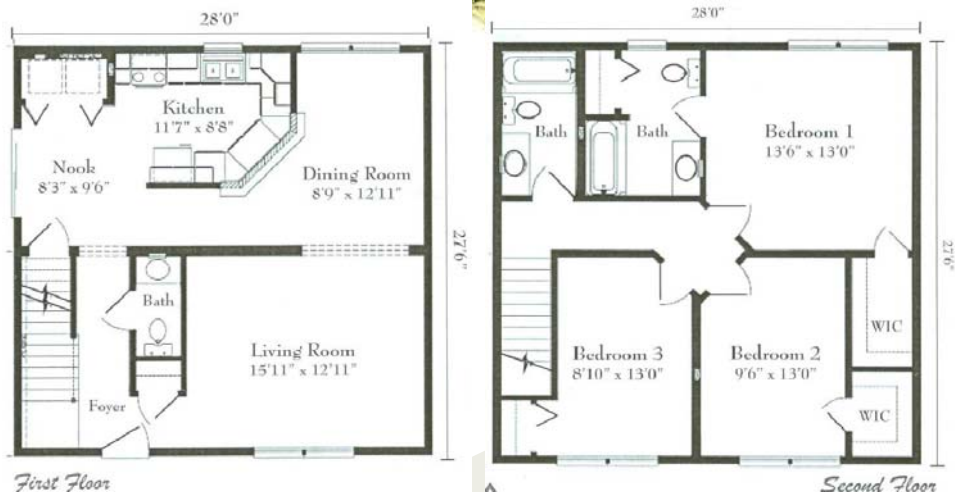
3 Bedrooms, 2 1/2 Bathroom
Dining Room, Living Room, Kitchen



CUSTOM MODULAR
DESIGNS, LLC

94B Jefferson Blvd.
Warwick, RI. 02888
401-490-0944

www.custommodulardesigns.com



CALL CUSTOM MODULAR DESIGNS FOR ALL OF YOUR MODULAR CONSTRUCTION NEEDS AND FIND OUT WHY CUSTOM MODULAR DESIGNS, LLC IS THE FASTEST GROWING MODULAR COMPANY IN NEW ENGLAND.

Copyright protected worldwide. No portion of this newsletter may be copied or reproduced in whole or in part without the express written consent of Custom Modular Designs, LLC.