

► TERMS VISUALLY DEFINED.....1

○ ISSUE 7 | ○ VOLUME 3 | ○ July 2009

► MODULAR MARKETWATCH.....1

► WHAT IS GREEN BUILDING.....2

► MODULAR CONSTRUCTION FINANCING.....2

Modular Press

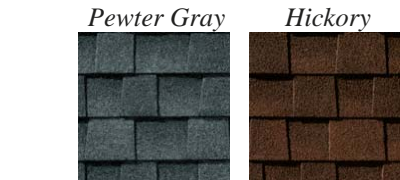
CUSTOM MODULAR DESIGNS, LLC. PROVIDES THE CURRENT TRENDS IN MODULAR HOME BUILDING

New 30-year Archtectual Shingles

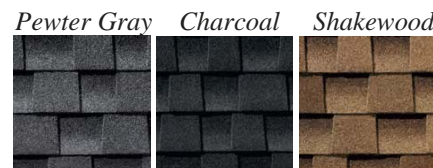
Custom Modular Designs is proud to announce are new partner for roof shingles – GAF-Elk. GAF Materials Corporation was founded in 1886 and is North America’s largest manufacturer of residential and commercial roofing shingles. GAF roofing shingles are rugged, dependable and attractive.

GAF shingles come in a number of different colors.

Standard – Timberline Natural Shadow



Upgrade – Timberline Prestique

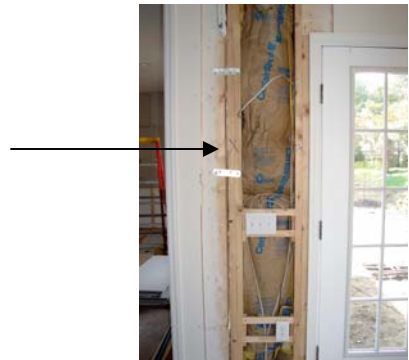


If you are interested in these shingle options please contact our offices at 401.490.0944.

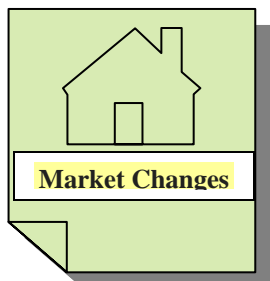
Terms Visually Defined

Marriage Point: This is the point where two modular boxes come together.

Marriage point as shown on a side wall:



Marriage point as shown on the floor:



MODULAR MARKET WATCH

Our manufacturer now provides the only “Turn-Key” Energy Star Certification Program in the industry. Additional ENERGY STAR-certified items may be added to give you enhanced energy efficiency and savings. Products that are outside of this Program can be special ordered if the consumer would like them in their new home. For further information regarding the energy star program contact our office.



What is Green Building?

Learning the details of green building

Green construction is becoming more popular. Green building is a complete approach to every part of the building process, including: construction, design, energy, water efficiency and lot development. Green building uses recycled and reused materials or materials made from renewable resources.

Building green minimizes the negative impact on the environment and the community. It reduces callbacks while increasing product differentiation and profit for the homebuilder.

It can also lower operating costs, improve construction methods, reduce maintenance issues, and increase home value.

Our modular process for green home building is less complicated than the site-built process. Modular homes are built in sections in a factory environment, where more precise angles and seals can be created. On-site construction is less precise than factory construction and can lead to less tight homes. Modular homes can also be developed "green" using natural, non-toxic and

sustainable materials.

Often, green buildings cost approximately the same amount as a standard home. Over the long run, cost savings show up in energy/utility bills. According to the U.S. Environmental Protection Agency, good green buildings may cost only a few percentage points more than conventional designs.

To learn more about green building, contact our office or visit our website.

MODULAR CONSTRUCTION FINANCING:

Finance Company of the Month



Salem Five

*Mark Butler
Vice President*

210 Essex St
Salem, MA 01970
Toll Free: 1.800.932.5626
Phone: 978.720.5684
Email: mark.butler@salemfive.com
Website: www.salemfive.com

Home of the Month

The Havorford

\$83,300.00*

28' x 28'

2-Story

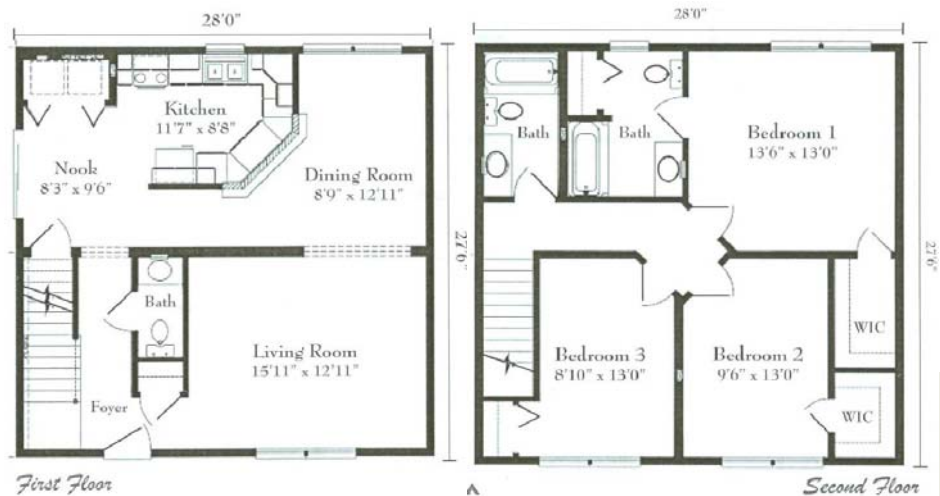
3 Bedrooms, 2 1/2 Bathroom
Dining Room, Living Room, Kitchen



CUSTOM MODULAR
DESIGNS, LLC

94B Jefferson Blvd.
Warwick, RI. 02888
401-490-0944

www.custommodulardesigns.com



CALL CUSTOM MODULAR DESIGNS FOR ALL OF YOUR MODULAR CONSTRUCTION NEEDS AND FIND OUT WHY CUSTOM MODULAR DESIGNS, LLC IS THE FASTEST GROWING MODULAR COMPANY IN NEW ENGLAND.

Copyright protected worldwide. No portion of this newsletter may be copied or reproduced in whole or in part without the express written consent of Custom Modular Designs, LLC.